

# Cantilever Carport

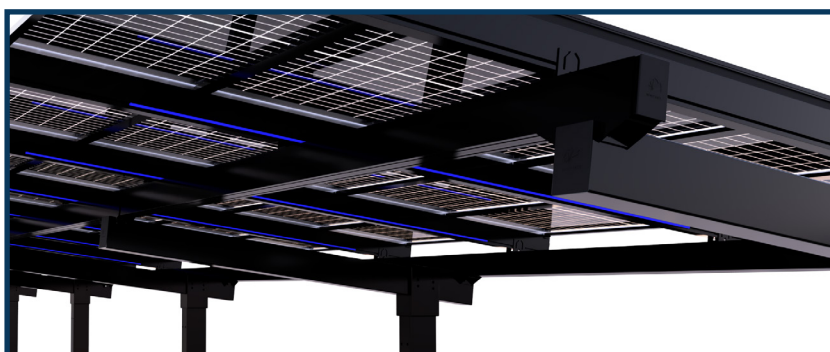


## INFINITY RACK

### Product Overview

Infinity Rack Cantilever Carports are the most advanced solar carports on the market. They are mechanically watertight with internal wire chaseways that protect all wiring, eliminating the safety concerns of traditional solar carports where wires can fail.

Columns and T Tops are constructed with galvanized steel and powder-coated for a durable finish, while our purlin framing and roof are all designed with our powder-coated aluminum extrusions allowing for T bolt slot mounting points for adjustability and ease of install. Our carports boast a sleek, high-end aesthetic. Built to handle extreme weather, Infinity Rack Cantilever Carports ensure both functionality and style.



### Technical Data

Product Details	Specification
Max Span on Frame Beam	27ft (Custom solutions available)
Max Span on T-Top	18ft (6ft cantilever past steel frame)
Max Clear Height	16ft (Custom solutions available)
Max Structure Length	300ft
Max Structure Depth	42ft
Powdercoat	2604
Color Options	White, Beige, Black & Custom
Aluminum Alloy & Temper	6005A-T61 (Roofbeam) 6036-T6 (All other components)
Max Wind Speed	195MPH
Max Snow Load/Span	100psf

### Features

- ✓ Mechanically watertight with horizontal support clamps and EPDM gaskets
- ✓ Fully encapsulated dual wiring chaseways for AC & DC wiring
- ✓ Engineered for extreme weather and snow loads
- ✓ Supports large format bifacial solar panels on all four sides
- ✓ Post bases designed to accept conduit or plumbing for direct integration of electric, water and gas into the frame



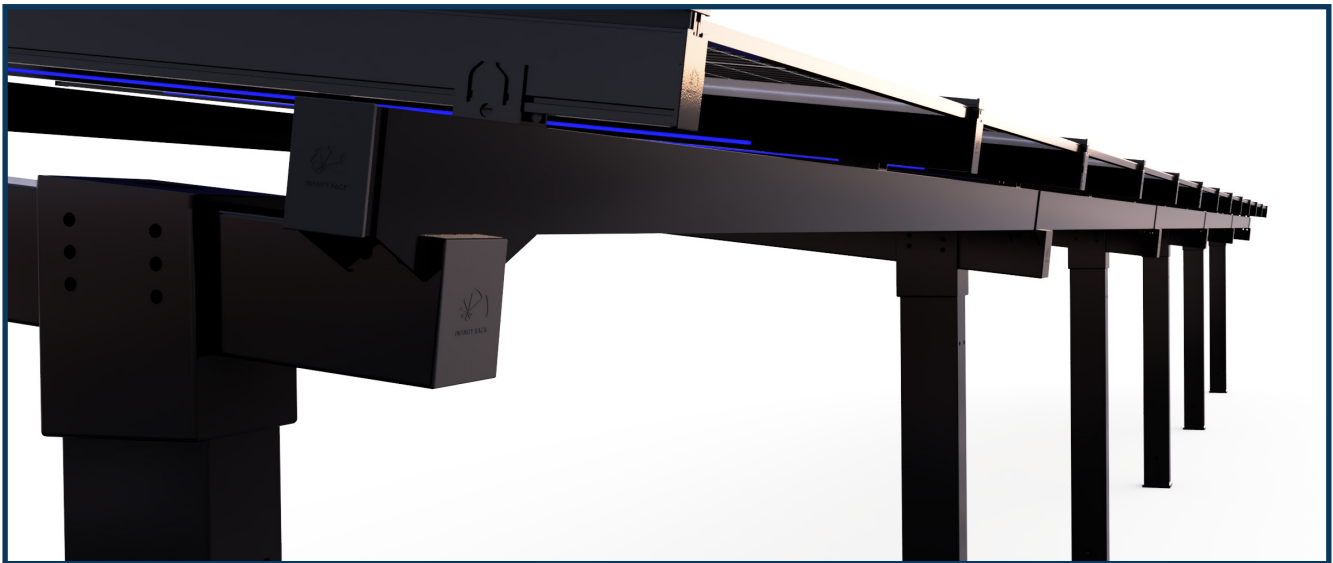
### Options

- Single and Dual Cantilever designs
- 3 to 11 modules deep in landscape orientation
- Multiple height options up to 16ft clearance for RVs, Trucks & Buses
- Accessory LED lighting kits available
- Customizable color options
- Custom framing layouts

# Cantilever Carport



INFINITY RACK



## Ease of Installation

Our cantilever carports feature welded steel tubes that slide into columns, locking securely in place before bolting. This ensures a safer installation with the flexibility for slight adjustments to ensure level alignment of the T tops. Adjustment is easily achieved by tightening bolts on either side of the column against the connecting tube.

## Warranty

The Limited Warranty of Infinity Rack, LLC (Infinity Rack) applies to framing and solar mounting products manufactured or distributed by Infinity Rack. Lifetime structural warranty on all Infinity Rack framing and brackets, 10 year warranty on gaskets & paint, 6 month warranty on lighting.

